

Every moment of AI video production, in one workspace.

An AI video production platform for creators, Klipse

SFACSPACE



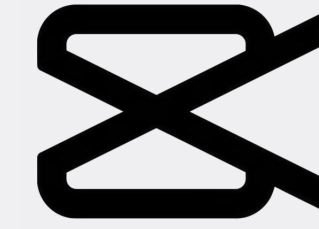
V 2026.06.05

The diversification of AI video creation tools expands the range of creative possibilities.

ChatGPT



CapCut



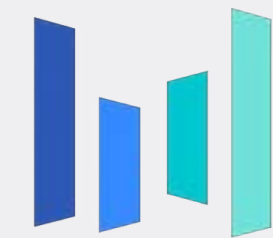
Grok



Firefly



Seedance



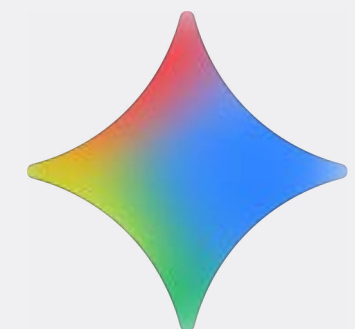
Midjourney



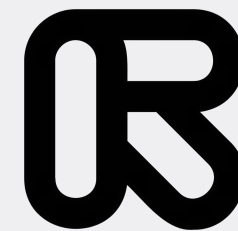
Premiere Pro



Gemini



Runway



However, the production process becomes just as fragmented.

From image generation and video production to editing, uploading, and performance tracking, each step requires moving between different tools.

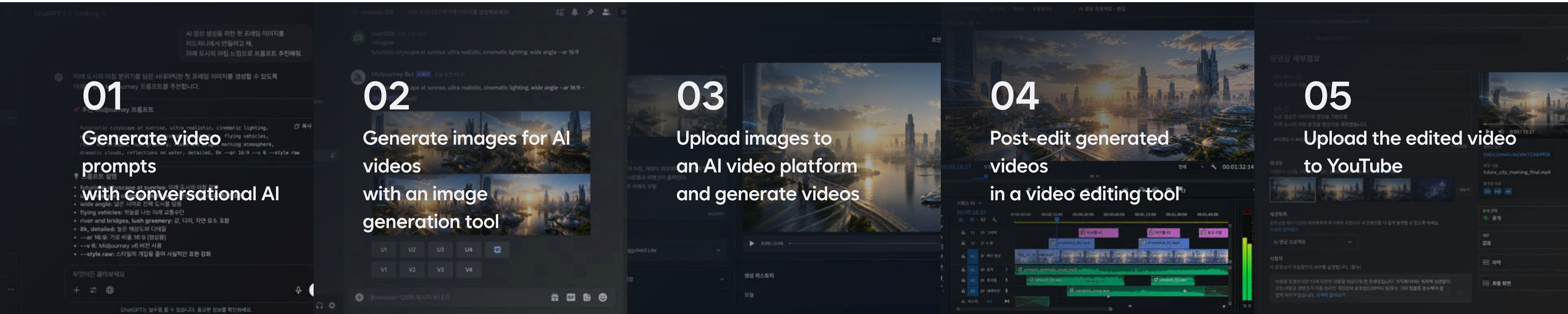
01
Generate video prompts with conversational AI

02
Generate images for AI videos with an image generation tool

03
Upload images to an AI video platform and generate videos

04
Post-edit generated videos in a video editing tool

05
Upload the edited video to YouTube



And the subscription costs from each tool become another burden for creators.

Each function requires a separate paid plan, and as more tools are added, the overall cost of video production increases.

Prompt / Planning / Image Generation

Image Generation

Video Generation

Video Editing

\$20~

ChatGPT

\$10~

Midjourney

\$10~

Kling

\$22.99

Premiere Pro

\$19.99~

Gemini

\$9.99

Firefly Standard

\$15~

Seedance

\$19.99

CapCut Pro

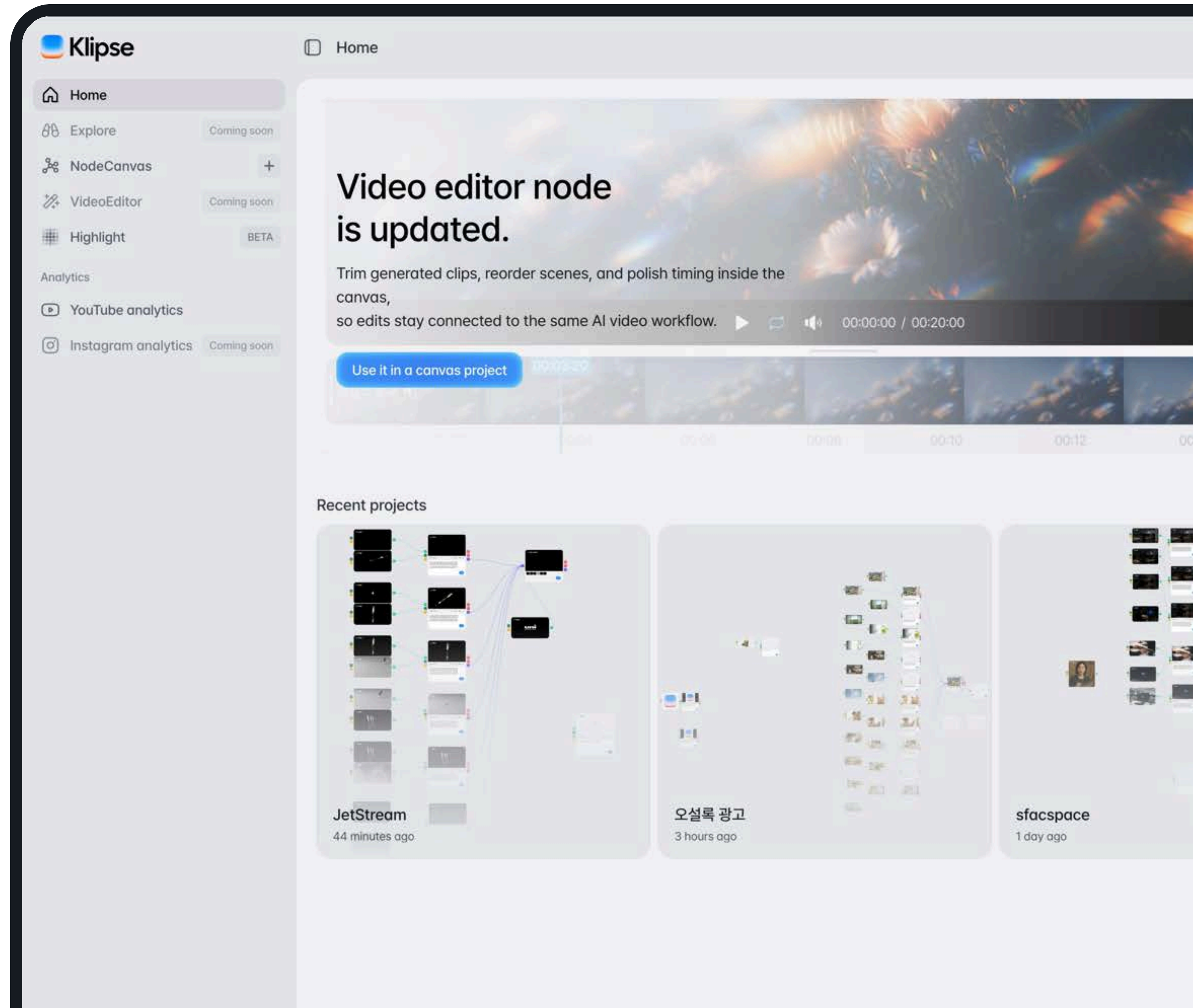
Based on the lowest paid plan of each service.

Klipse solves these problems
with a single workspace.



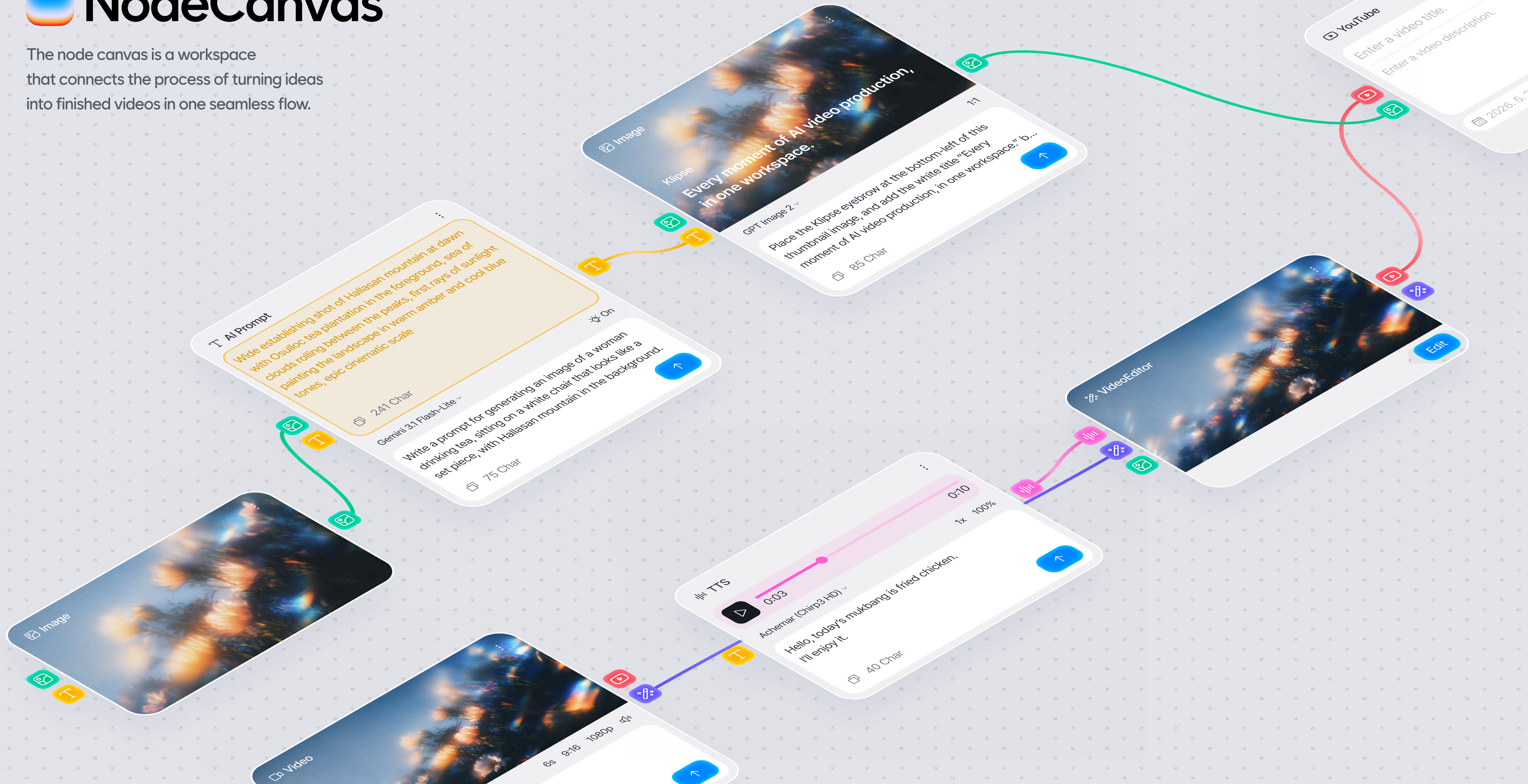
Klipse is an AI video production platform built for creators.

With just an idea, creators can generate images and videos, edit, upload, and analyze performance all within a single workspace.



NodeCanvas

The node canvas is a workspace that connects the process of turning ideas into finished videos in one seamless flow.



 Text Node

Get prompt suggestions for generating images and videos.

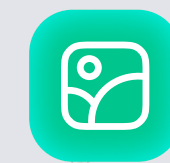
Describe the image or video you want to create,
and AI will write a prompt for you.

 On

When reasoning is enabled, AI analyzes your request in more depth
and designs a prompt closer to the result you want.


Supported AI Models

Gemini
ChatGPT




 AI Prompt 

Wide establishing shot of Hallasan mountain at dawn,
with a tea plantation in the foreground.
A sea of clouds rolls between the peaks,
while the first sunlight paints the landscape
in warm amber and cool blue tones.
Epic cinematic scale.

 241 Char

Gemini 3.1 Flash-Lite 

 On

Write a prompt for generating an image of a woman
drinking tea, sitting on a white chair that looks like a
set piece, with Hallasan mountain in the background.

 75 Char





Connect a prompt or enter one directly to generate the image you want.

Select an image ratio and AI model
to create the scenes needed for video production.

16:9

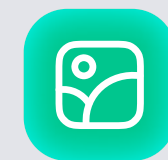
Select a ratio to set the aspect ratio
of the image you want to generate.

Supported AI Models

Nano Banana Pro

Nano Banana 2

GPT Image 1.5



Image

Klipse

**Every moment of AI video production,
in one workspace.**

GPT Image 1.5 16:9

Place the Klipse eyebrow at the bottom-left of this thumbnail image, and add the white title "Every moment of AI video production, in one workspace." b...

85 Char ↑



Upload images directly.

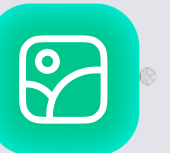
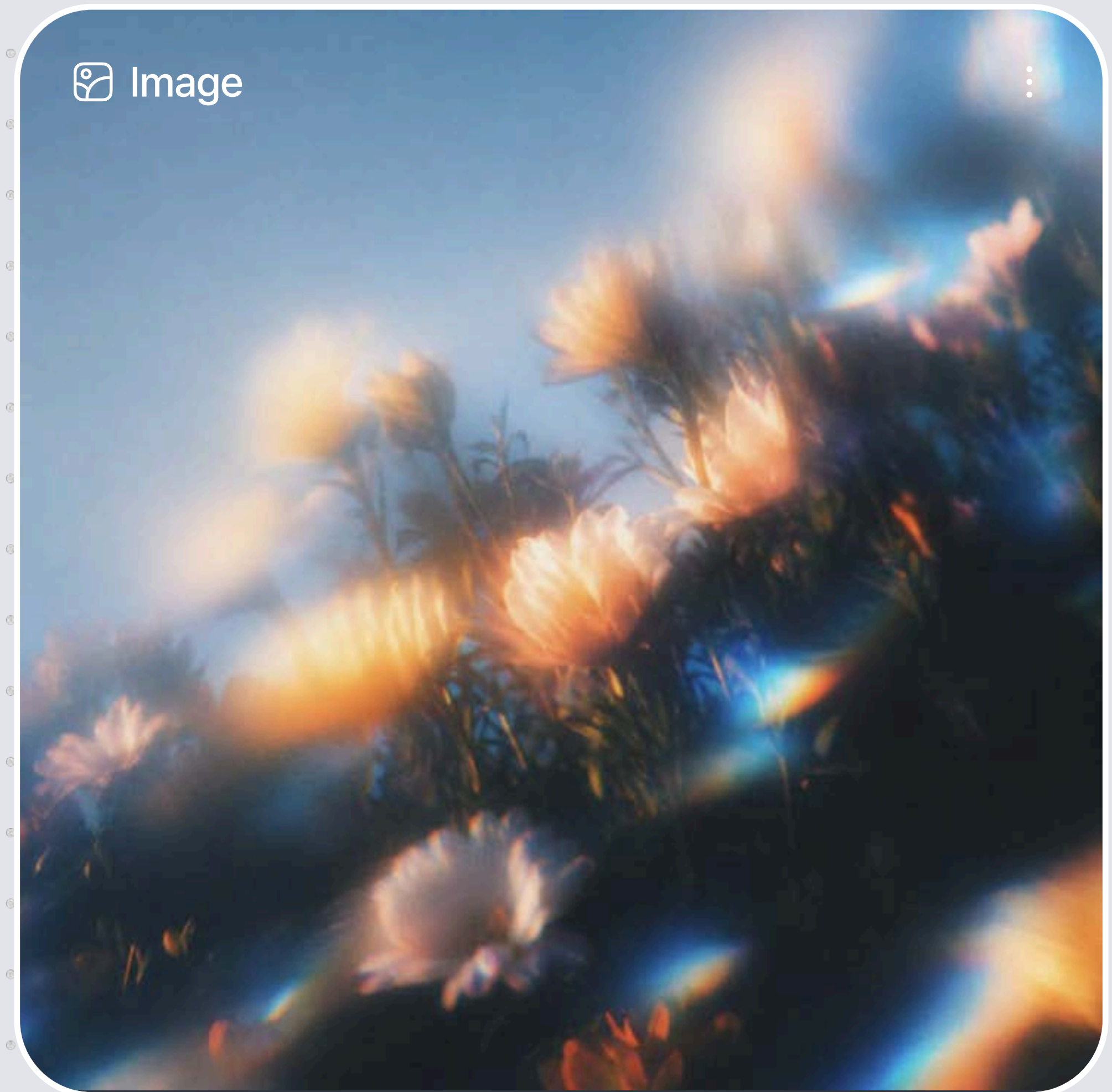
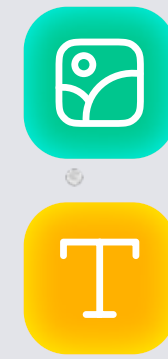
You can use uploaded images as start/end frames,
or use them as reference images.

Supported AI Models

Nano Banana Pro

Nano Banana 2

GPT Image 1.5



Generate video clips from prompts and images.

Set the AI model, length, aspect ratio, and resolution to create the scene you need.

6s

Set the length of the video to generate.

16:9

Set the aspect ratio of the video to generate.

1080p

Set the resolution of the video to generate.



Choose whether to include sound in the generated video.

Supported AI Models

Veo 3.1

Kling 2.6 & 3.0

Kling Omni

Seedance 2.0 Coming soon

Video

Kling 3.0 Pro ▾

6s 9:16 1080p 🔊

Describe the video you want to create.

📄 0 Char

↑



Convert text into natural speech.

Generate the entered script in the voice you want, and adjust the speed and volume to create audio that fits your video.

1x

Set the narration speed.

100%

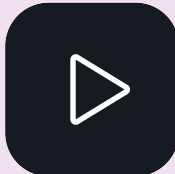
Set the narration volume.

Supported AI Models

Chirp3 HD





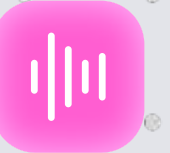
||| TTS ⋮

 0:03 0:10

Achernar (Chirp3 HD) ▾ 1x 100%

Hello, today's mukbang is fried chicken.
I'll enjoy it.

 40 Char 



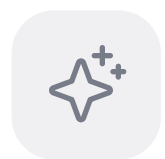


Upload completed videos directly to your YouTube channel.

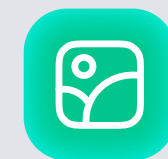
Set the video title, description, and upload schedule, then upload content to your connected channel.



Connect an Image Node to the image button on the left side of the YouTube Upload Node to set the content thumbnail image.



Click the button and AI will generate a title and description for your content.



YouTube

Enter a video title.

Enter a video description.

2026. 7. 1 (Wed) 12:00 PM

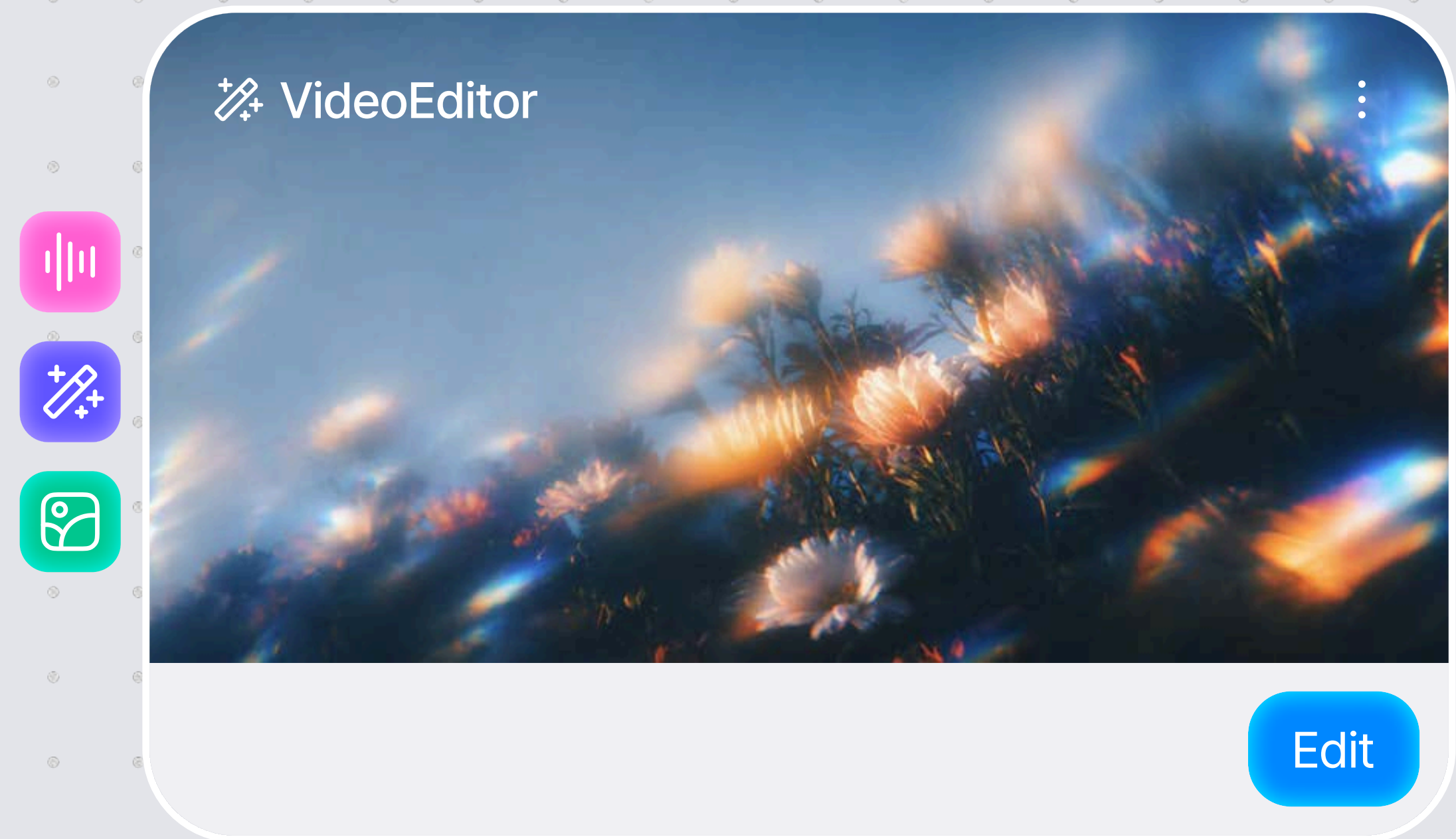
Upload

 Video Editor Node

Connect generated videos to the editing screen.

Click the Edit button to open the video editor, where you can edit subtitles, audio, and clip structure.

You can also connect an edited Video Editor Node to another Video Editor Node for further editing.



Analytics

View your channel performance in one dashboard.

Check data from the YouTube channel connected to your Klipse account through the performance analytics dashboard.

- Home
- Explore Coming soon
- NodeCanvas +
- VideoEditor Coming soon
- Highlight BETA
- Analytics
 - YouTube analytics
 - Instagram analytics Coming soon



스나이퍼팩토리

취업 정보 저격수, 스나이퍼팩토리
Snipe your dreams



Sniperfactory

Overview Performance Audience

Some recent YouTube analytics may take up to 72 hours to appear.

Avg. view duration

17s

Comments

2

Subscribers

+24 +26.3%

Views

2.1M +1563.8%

Jun 5, 2025 - Jun 2, 2026




Watch time

6,043h 48m +938%



Channel content

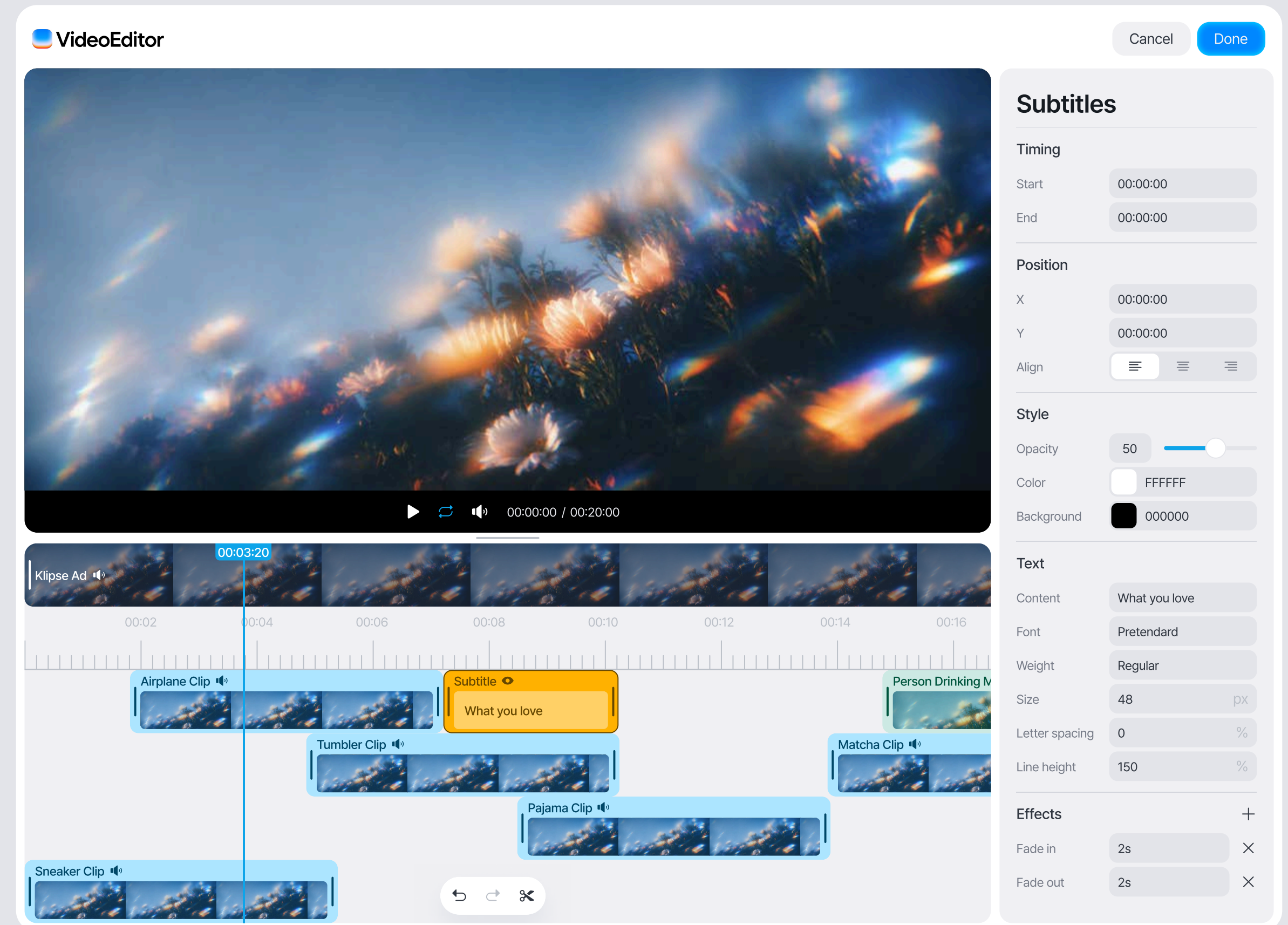
Video	Visibility	Date
 copy_1B9D7D5D-4D49-4D4F-88CD-0FB9C9EB6E4E.MOV copy_1B9D7D5D-4D49-4D4F-88CD-0FB9C9EB6E4E.MOV	Unlisted	Jun 2, 2026





Video Editor for Higher-Quality Videos

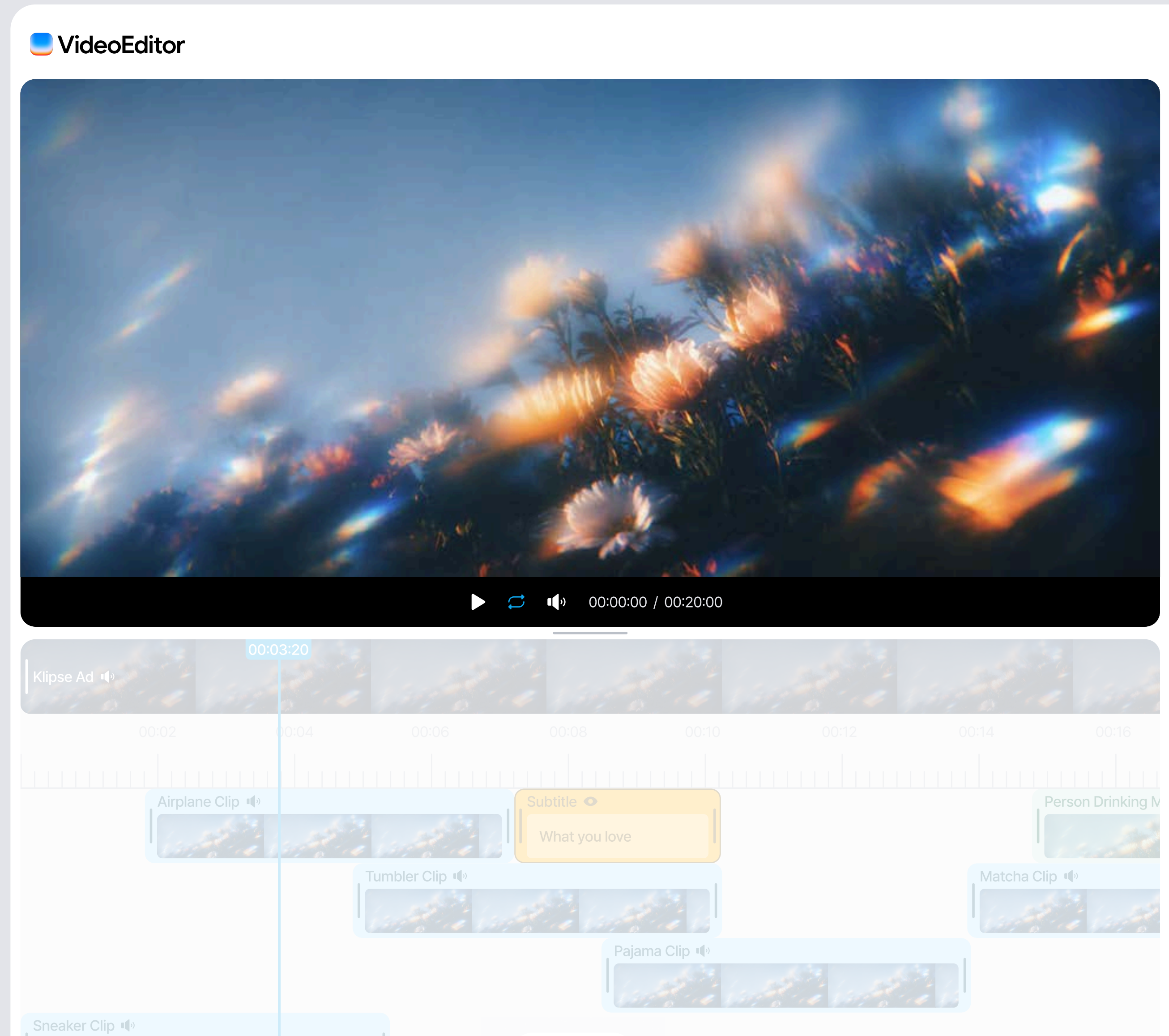
Connect generated videos to the video editor to trim clips and add subtitles or images.



Preview

Preview your edits as they will appear in the final video.

Review subtitles, audio, and effects in real time
to check the video's flow and overall quality.



Timeline

Connect short clips into one complete flow.

Adjust the length and position of each element
to edit the video in the flow you want.



Fine Adjustment

Fine-tune the selected element.

Adjust its position, style, effects, and more
to get the look you want.

The screenshot displays a video editing interface. At the top, there are 'Cancel' and 'Done' buttons. The main area is divided into a video preview and a settings panel. The video preview shows a scene with flowers and a subtitle 'What you love' on a timeline. The settings panel, titled 'Subtitles', includes sections for Timing, Position, Style, Text, and Effects. The Timing section has 'Start' and 'End' timecode inputs. The Position section has 'X' and 'Y' timecode inputs and an 'Align' dropdown. The Style section features an 'Opacity' slider set to 50, a 'Color' picker set to FFFFFFFF, and a 'Background' color picker set to 000000. The Text section includes 'Content' (What you love), 'Font' (Pretendard), 'Weight' (Regular), 'Size' (48 px), 'Letter spacing' (0 %), and 'Line height' (150 %). The Effects section has 'Fade in' and 'Fade out' durations set to 2s.

Cancel Done

Subtitles

Timing

Start 00:00:00

End 00:00:00

Position

X 00:00:00

Y 00:00:00

Align

Style

Opacity 50

Color FFFFFFFF

Background 000000

Text

Content What you love

Font Pretendard

Weight Regular

Size 48 px

Letter spacing 0 %

Line height 150 %

Effects

Fade in 2s

Fade out 2s

 **Highlight**



Turn long videos into short, powerful content.

Highlight is a service that extracts key clips from long videos with a simple upload process.

Highlight

Pick the highlights from a long-form video and auto-generate short clips, with control over how many scenes you keep — all in one flow.



Please upload a long-form video.

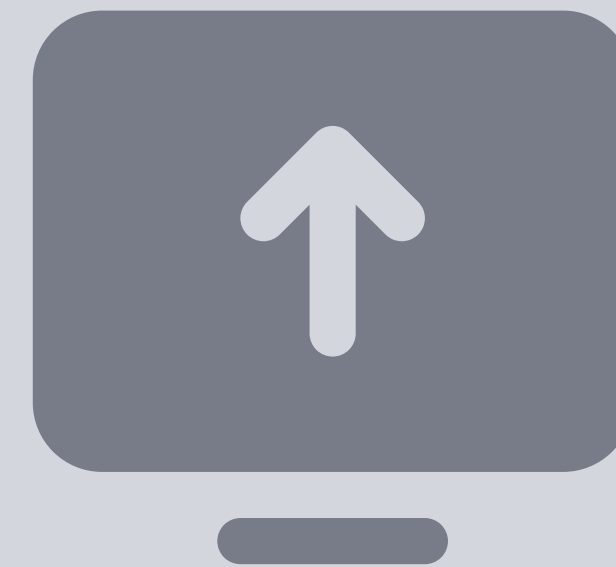
Live Commerce ▾

Generate ✦

 Highlight

Upload a long video directly or select one from a connected channel.

The uploaded video is analyzed by AI
and used as the source for extracting highlights.



Please upload a long-form video.

The option to select videos from a connected channel will be available in a future update.



Select a topic for the uploaded video.

AI analyzes the video flow based on the selected topic and finds scenes suitable for highlights.

Live Commerce ^

Topic

Live Commerce

Sports

Vlog

Mukbang

Education

Interview

Gaming

 Highlight

Click Generate to start AI video analysis.

AI analyzes the long video based on the selected topic
and finds scenes that can be used as highlights.

Generating 



Generated projects are automatically saved to the archive.

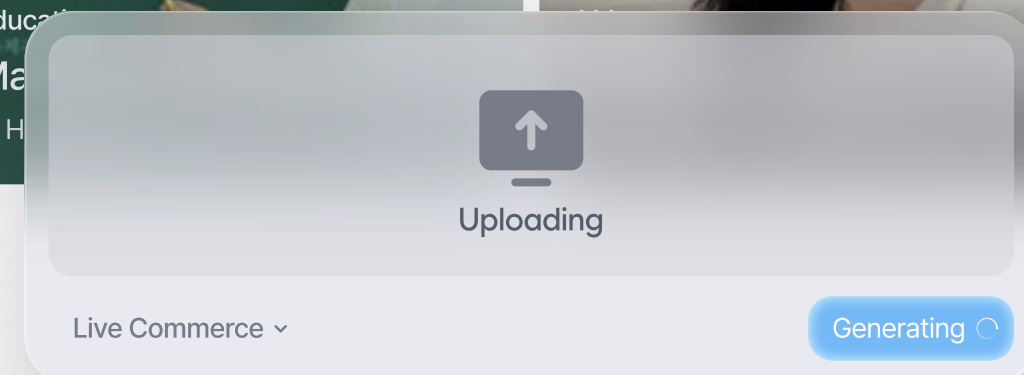
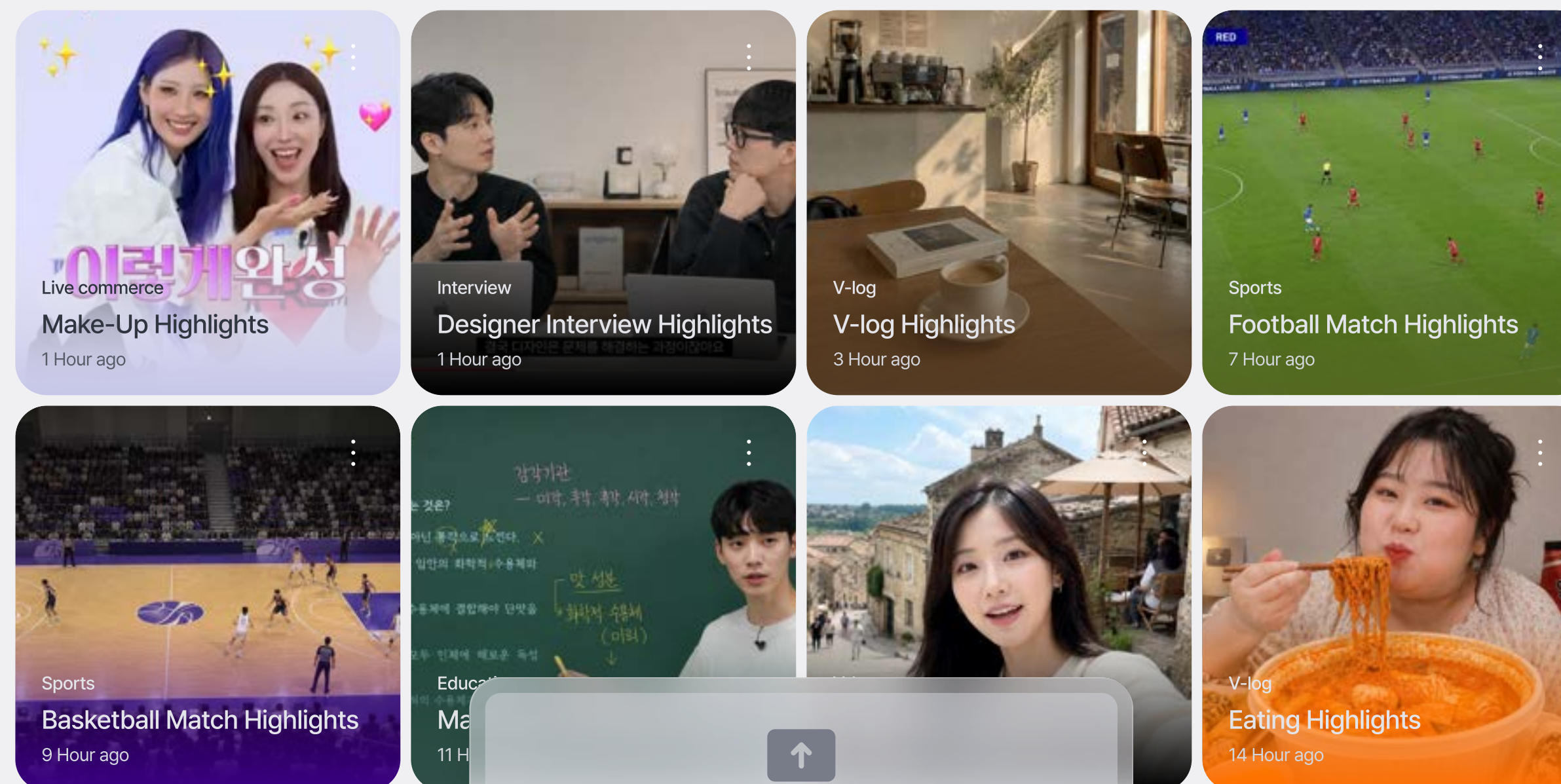
From ongoing extraction tasks to completed results, all projects are saved as cards so you can revisit them anytime.

While AI analyzes your video, you can check previous projects or continue creating new ones.

Highlight

Pick the highlights from a long-form video and auto-generate short clips, with control over how many scenes you keep — all in one flow.

Archive 95





View extracted clips inside each project.

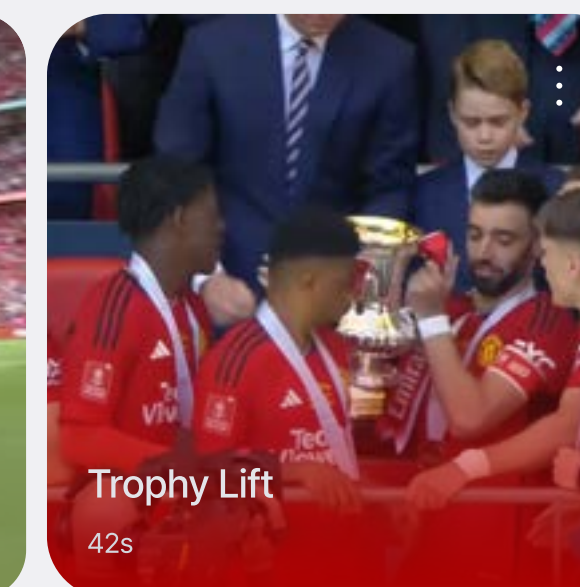
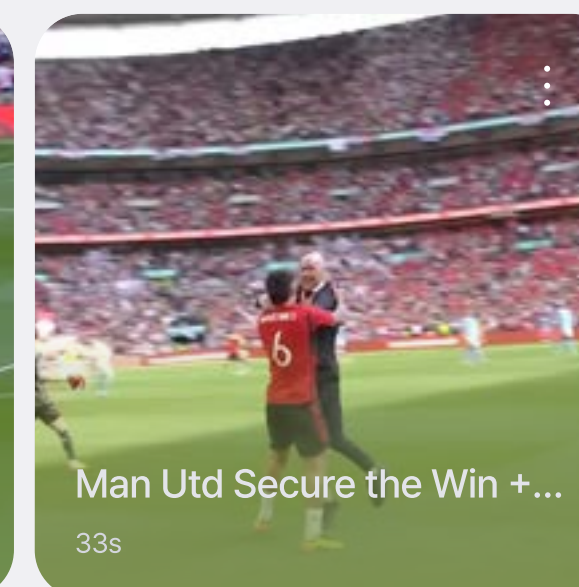
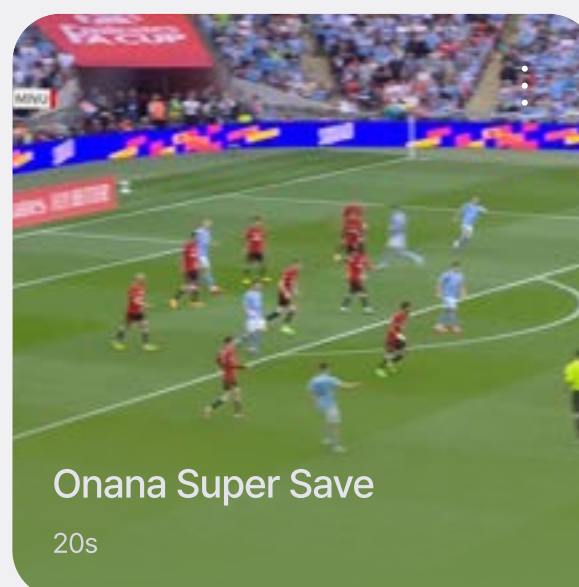
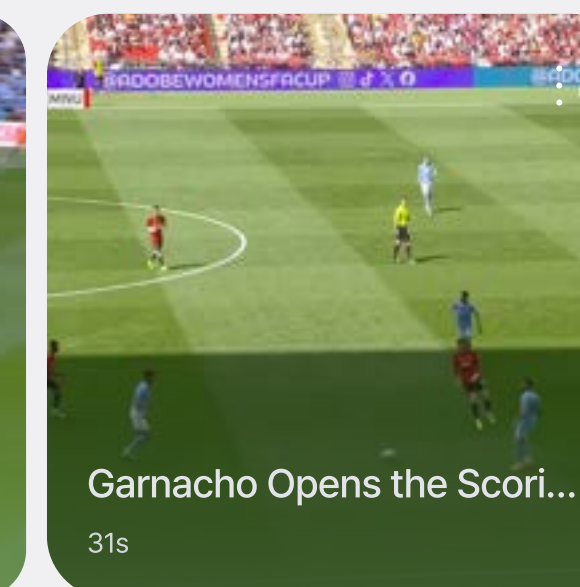
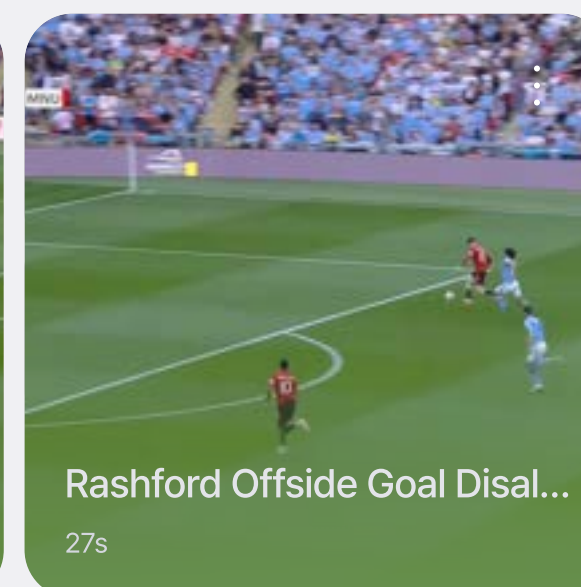
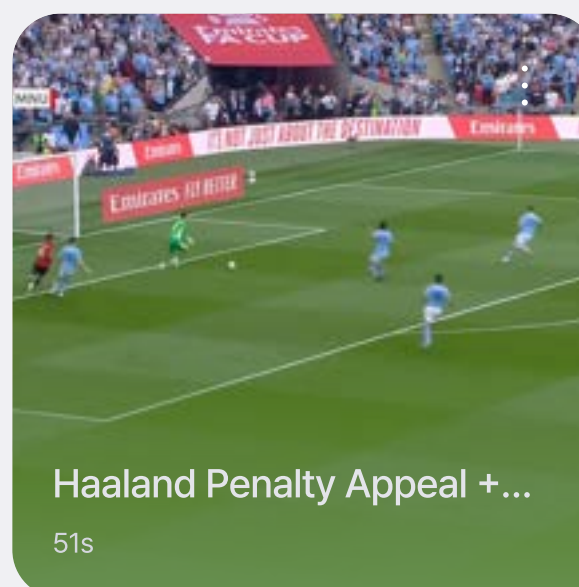
Key moments found by AI are organized as cards, so you can quickly review and select the clips you need.



Sports

Football Match Highlights

Clips 8



 Highlight

AI explains why this scene is a highlight.

You can play or download the extracted clip, and check the title and selection reason generated by AI.



29:13 - 29:50 37s

Garnacho Opens the Scoring for Man Utd

A mistake by the Manchester City defense leads to Garnacho's opening goal, and the scene includes an emotional ceremony, making it a dramatic scoring moment.

Subscription plans tailored to your scale

Trial

Free

300 credits included

Basic features for testing

- ✓ Up to 3 projects
- ✓ Generate test videos
- ✓ Basic video editing
- ✓ Up to 10 minutes of highlight input videos

Basic

₩35,900 / month

1,800 credits included

Includes all Trial features

- ✓ Up to 12 projects
- ✓ Generate videos based on distribution AI images
- ✓ YouTube upload available
- ✓ AI prompt support
- ✓ Up to 30 minutes of highlight input videos
- ✓ Additional credit top-up available

Pro

₩59,900 / month

3,000 credits included

Includes all Basic features

- ✓ Up to 24 projects
- ✓ Generate all-model AI videos
- ✓ Supports 1080p FHD resolution
- ✓ Up to 120 minutes of highlight input videos
- ✓ YouTube channel analytics dashboard provided
- ✓ YouTube scheduled upload available

Max

₩89,900 / month

4,500 credits included

Includes all Pro features

- ✓ Unlimited projects
- ✓ Generate test videos
- ✓ Maximum monthly credits

Monthly subscription plans can be used for 1 month from the payment date, and will renew automatically on the same billing date each month.

Additional credit model that lets you use more as needed

Bronze

₩4,900

250 credits included

Based on each model's lowest-cost option

- ✔ Generate about 16 images
- ✔ Generate about 3 Veo Lite 8-second clips
- ✔ Generate about 2 Kling V3 8-second clips
- ✔ Generate about 2 Kling Omni 8-second clips
- ✔ Generate about 3 Veo Lite 8-second clips
- ✔ About 250 minutes of highlight input videos

Silver

₩9,900

550 credits included

Based on each model's lowest-cost option

- ✔ Generate about 36 images
- ✔ Generate about 8 Veo Lite 8-second clips
- ✔ Generate about 5 Kling V3 8-second clips
- ✔ Generate about 5 Kling Omni 8-second clips
- ✔ Generate about 8 Veo Lite 8-second clips
- ✔ About 550 minutes of highlight input videos

Gold

₩29,900

1,800 credits included

Based on each model's lowest-cost option

- ✔ Generate about 120 images
- ✔ Generate about 28 Veo Lite 8-second clips
- ✔ Generate about 17 Kling V3 8-second clips
- ✔ Generate about 17 Kling Omni 8-second clips
- ✔ Generate about 28 Veo Lite 8-second clips
- ✔ About 1,800 minutes of highlight input videos

Monthly subscription plans can be used for 1 month from the payment date,
and will renew automatically on the same billing date each month.

Thank you

www.klipse-ai.com →

